

*Franklyn
James*



Padstone House, Capulet Square, E3 3NE

£285,000

*Franklyn
James*



Padstone House, Capulet Square, E3 3NE

£285,000

- Open plan fully fitted kitchen
- Large reception
- Bike storage
- Close to Startford City
- Easy access into Westfield shopping centre
- Walking distance of Bromley by Bow Station

EPC rating- C
Tax band- C



A smartly presented one-bedroom apartment offering modern, comfortable living in a bright and welcoming space. The bedroom features built-in wardrobes, maximizing storage, while the contemporary three-piece bathroom provides a clean and stylish finish. The open-plan, fully fitted kitchen flows seamlessly into a light-filled reception area, perfect for relaxing or entertaining.

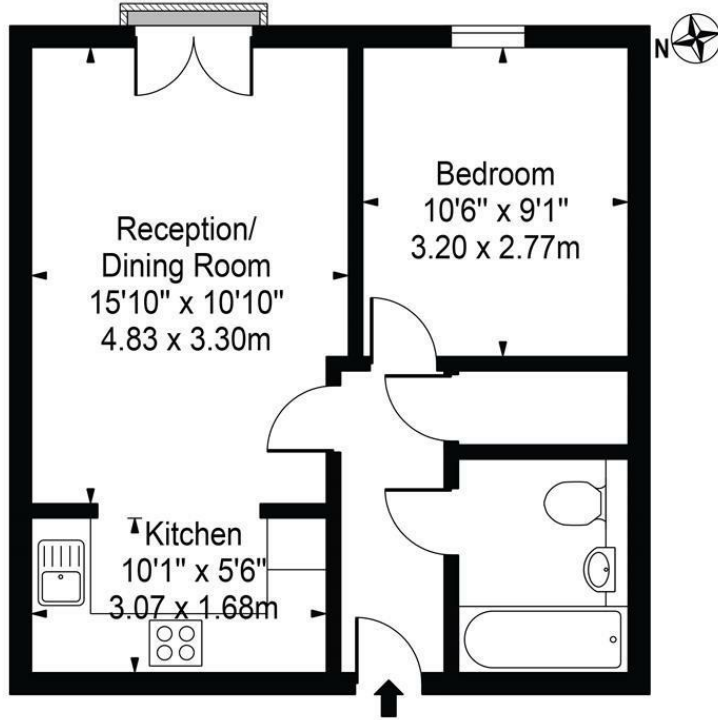
Additional benefits include secure bike storage and access to well-maintained communal gardens, ideal for enjoying some outdoor space.

Located just a short walk from Bromley-by-Bow Station, the property offers excellent connectivity to Stratford City and the vibrant Westfield Shopping Centre.

This apartment is perfect for first-time buyers looking for a move-in-ready home, or investors seeking a well-located property with strong rental potential.

Padstone House

Approx. Gross Internal Area 430 Sq Ft - 39.95 Sq M

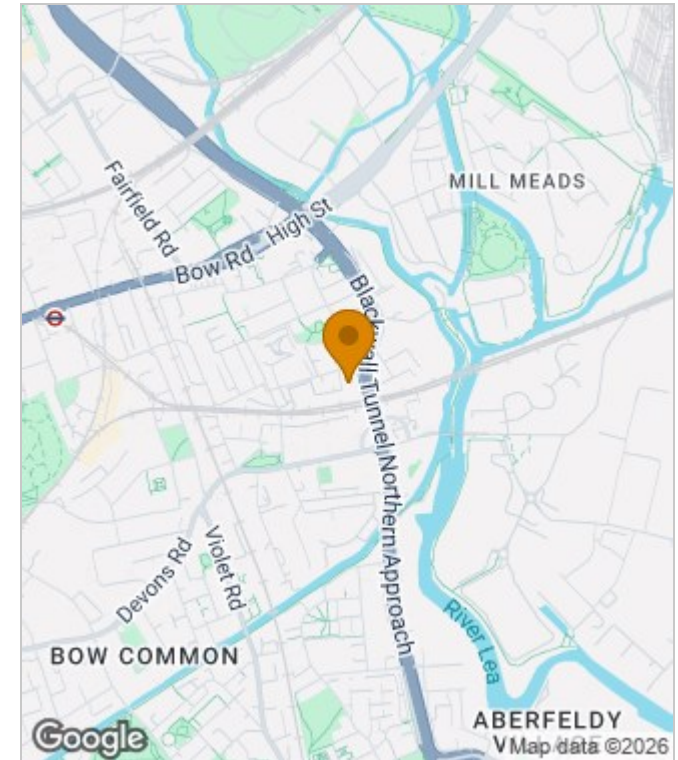


Ground Floor

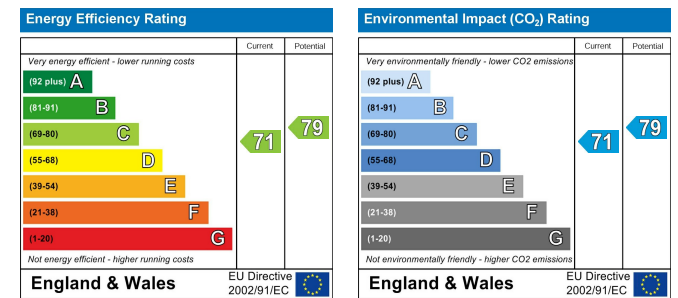
For Illustration Purposes Only - Not To Scale

This floor plan should be used as a general outline for guidance only and does not constitute in whole or in part an offer or contract. Any intending purchaser or lessee should satisfy themselves by inspection, searches, enquiries and full survey as to the correctness of each statement. Any areas, measurements or distances quoted are approximate and should not be used to value a property or be the basis of any sale or let.

Area Map



Energy Performance Graph



These particulars, whilst believed to be accurate are set out as a general outline only for guidance and do not constitute any part of an offer or contract. Intending purchasers should not rely on them as statements of representation of fact, but must satisfy themselves by inspection or otherwise as to their accuracy. No person in this firm's employment has the authority to make or give any representation or warranty in respect of the property.